



GOLDEN CONTAINERS LIMITED

North Kattali, Akbarsha, City Gate
Chittagong , Bangladesh

Contents

- INTRODUCTION
- BASIC PRINCIPLES OF GCL MANAGEMENT
- SERVICE AND FACILITIES OF GOLDEN CONTAINERS LIMITED
- SAFETY AND SECURITY STANDARD
- VISION / FUTURE PLAN
- ENVIRONMENTAL FOCUS
- CONCLUSION

• INTRODUCTION

- AN ESTABLISHED PRIVATE LIMITED COMPANY, UNDER COMPANIES ACT 1994.
- A SERVICE PROVIDER IN PORT OFF-DOCKS SECTOR.
- ESTABLISHED IN 2008, OPERATION STARTED IN AUGUST 2008.
- MANAGED BY GCL BOARD OF DIRECTORS.
- TOTAL OFFICERS AND STAFF-330, PERMANENT STAFF-240, & TEMPORARY STAFF-90,
- PRIVATE CASUAL LABORERS-150, WORKING UNDER GCL APPOINTED TWO CONTRACTORS.
- CUSTOMS AND PORT APPROVED BONDED OFF-DOCK/ICD.
- ISPS (INTERNATIONAL SHIP AND PORT FACILITY SECURITY) Validated Company.

■ Basic Principles of GCL Management

- ❑ To follow “Employee Code of Conduct” and working guide line.
- ❑ To make efficient and disciplined work force
- ❑ Ensure theft and pilferage free off-dock.
- ❑ Ensure smoking free off-dock environment.
- ❑ To make user friendly environment.
- ❑ To provide efficient customer satisfactory service.
- ❑ To make extra-cost free Off-Dock for the users.



- **SERVICE AND FACILITIES OF GOLDEN CONTAINERS LIMITED**

GCL provides following services to our clients:

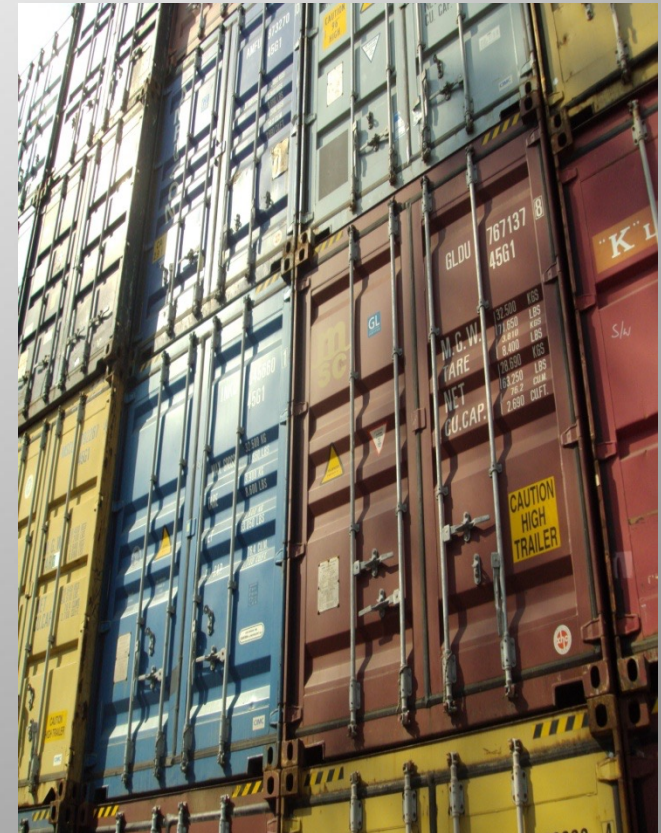
- **Container Service Department (CSD)**
- **Container Freight Station (CFS)**
- **Import**
- **Transportation**
- **Survey**

GOLDEN CONTAINERS LIMITED



a.CSD

- 1. Container handling.
- 2. Container storage.
- 3. Container stock maintain as per requirement.
- 4. Container survey.
- 5. Container repair and maintenance.
- 6. Reporting to MLO.
- 7. Container Transportation.
- 8. Maintaining real time operational information in Terminal Management Software



GOLDEN CONTAINERS LIMITED



b.CFS:

1. Cargo receiving as per standard guideline.
2. Damage reporting.
3. Cargo stuffing as per SOP/Forwarder/Buyers instruction.
4. CCTV monitoring
5. Q A facility.



GOLDEN CONTAINERS LIMITED



c. Import :

1. Import container receiving as per MLO/Importers instruction.
2. Storage of Import Container.
3. Complete delivery as per Importer/C&F instruction.
4. Reporting to MLO and Importer if required.



GOLDEN CONTAINERS LIMITED



d. Transportation:

1. We have our own transport department for container movement.
2. Container receiving from Port and delivery at Port by our own management system.
3. We handle all kind of Import and Export container by own Prime movers with full safety and security.



GOLDEN CONTAINERS LIMITED



e. Survey:

1. We have our own survey department headed by a senior certified surveyor.
2. As per our clients requirement we perform survey and report them accordingly.
3. We perform Empty Container survey.
4. Report load container survey with proper stuffing , sealing and delivery to Port.
5. Any other value added service as per customer requirement .





Service Facilities:

- **Location**
- **Yard Capacity**
- **Equipment Strength.**
- **Infrastructural and Operational Facilities**
 - **Export CFS Cargo**
 - **Export Yard Cargo**
 - **Import**
 - **Safety and Security**



- **Location :**
- **Golden Containers Limited** is situated beside **City Gate of Chittagong**, North Kattali, Akbarsha , beside Dhaka Chittagong Highway . Covered Van/Truck drivers, C&F agents and Freight Forwarders around the country can easily locate and well connected from the city centre. Another **advantage of this location** is the **distance** which is only **7.5 km from Chittagong Port and Customs House**. For **faster transportation** of container we can use two routes - Port connecting road and Toll road.



- **Yard Capacity:**
- Total Area: 4,75,200 sft / 47520 sqm.
- Holding Capacity: Total 4000 TEUs
- Import Capacity-1000 TEUs

• **Equipment Strength:**

- One 60 ton 5 high capacity Fantuzzi Reach Stacker.
- One 45 ton 5 high capacity Fantuzzi Reach Stacker.
- One 45 ton Kone Reach Stacker
- One 16 Ton 7 high Capacity Double Box Empty Handler
- 7no (seven) 3ton TCM forklift.
- One 10 ton high Mast forklift
- 5 Ton duplex mast Forklift.
- Two 45 ton boom crane with 32 m boom
- Thirty Four Prime Movers
- Forty five Trailers.
- Hand Palette truck
- Hand Trolly.

GOLDEN CONTAINERS LIMITED



- **Infrastructural and Operational Facilities**
- **Export CFS Cargo**
 - Total covered area 1,65,000 sft
 - **Flood free** Container Freight Station
 - Four **Separate CFS Block**.
 - **Total 40 receiving point** and **36 stuffing point**.
 - **Real Time Cargo information** through our TMS software.
 - 24 hrs **CCTV surveillance**.
 - Separate **Palletized cargo handling** facility.
 - Separate **dedicated desk** for customer service.
 - All desks are equipped with **internet connectivity**.
 - 24 hrs **customs**.
 - Cargo **scaling facility**.
 - **Fixed labour** for day and night.
 - **24x7 days open** for customer service.
 - Truck **parking facility**.
 - Standby **Generator**.
 - Canteen, toilet and shower facility for the outside drivers.



- **Yard Cargo:**
- Hanger shed for Yard cargo
- Dedicated desk for yard operation
- Speedy operation for using specialized container handling equipments.
- 90 ton capacity Weighing bridge/scaling facility.
- Pilferage free stuffing.
- Faster truck unloading due to shed facility.
- Lower trucking cost due to location advantage.

GOLDEN CONTAINERS LIMITED



- **Import:**
- 1000 TEUs import handling Capacity
- 25,000 sft multi purpose delivery shed.
- Nearby warehouse facility.
- Low trucking/ transport cost due to nearby ware house.
- Container and truck scaling facility to get actual quantity report.
- No pilferage and no shortage of import commodity.
- Very easy to locate by the Importers, C&F/ other parties and truck drivers as it is located beside City Gate.
- No congestion and no traffic jam.
- Separate import labour gang.
- Truck waiting facility.
- Faster placement and removal of container due to modern equipments.



- **Safety and Security:**
- We have achieved the **ISPS (INTERNATIONAL SHIP AND PORT FACILITY SECURITY) certificate** by complying all ISPS requirements which is the benchmark of international and our Safety and Security and by practicing in every operational activity we assure our clients that they are working in a international standard facility where every individual employee believes and practices that safety and security is must in every level and only way to protect the national and international assets from outward dangers. Our facility is also GSV and Accordia



- **7. Future Plan:**

- To expand storage capacity of Empty Container.
- Adopt technology to maximize productivity of handling cargo and containers and develop customer service.
- To provide service to our clients beyond sky limit.
- To achieve the award of Best Customer Service Oriented ICD from our clients.
- To participate more in the economic development of the nation.
- To participate more is CSR activities.



- **Environmental Focus:**
- GCL always focus on cost reduction and minimization of environmental impact in our daily life as well as in our work field through better logistics and proper estate planning and management. We also encourage our valuable partners regarding this issue and to use Recycle able or Eco-friendly products as much as possible to create a better world for our next generation.

GOLDEN CONTAINERS LIMITED



- **Conclusion:**
- In conclusion we like to say that we accomplish our Mission by:
- Accumulating in-depth knowledge of our customers, the interaction with their business partners and their industry to provide better service as per their needs.
- Recruiting, empowering and rewarding talented and motivated people.
- Selecting and developing a network of effective and reliable affiliates.
- Applying proven enabling technologies, techniques and tools for developing and executing innovative logistics solutions.
- Improving the value of our services by continuously reassessing current solutions and jointly developing new capabilities with our customers.

Ensuring that the environment in which we operate is safe, healthy and secure.

--The End--

APPEARANCE

We stand on the right
the right reason

Contact

Golden Containers Limited

Office Phone-+88-031-2771824-25

Fax- +88-031-752237

E.mail: gclinfo@gclbd.com

www.gclbd.com